

WHAT IS A DURABLE SOLUTION?

A durable solution (voluntary repatriation, local integration and resettlement) is achieved when displaced persons no longer have any specific assistance and protection needs that are linked to their displacement and they can enjoy their rights without discrimination on account of their displacement.

ABOUT ReDSS

A coalition of 12 NGOs committed to do more and better together in the search for durable solutions. It is not an implementing agency but a coordination and information hub. In Somalia, ReDSS is supporting its members and other partners to achieve a collective response to displacement by ensuring a coherent and coordinated approach in the search for durable solutions across the various regions. For more information about ReDSS visit: www.regionaldss.org

ABOUT EU RE-INTEG PROGRAMME

The EU RE-INTEG Programme (Enhancing Somalia's responsiveness to the management and reintegration of mixed migration flows) is funded by the European Union and seeks to support sustainable re-integration of refugee returnees and IDPs in Somalia. The programme also seeks to enhance the capacities of the Somalia government and local authorities to assume their primary responsibility for facilitating durable solutions through an increased accessibility to basic services and creation of livelihoods.

The programme has three result areas:

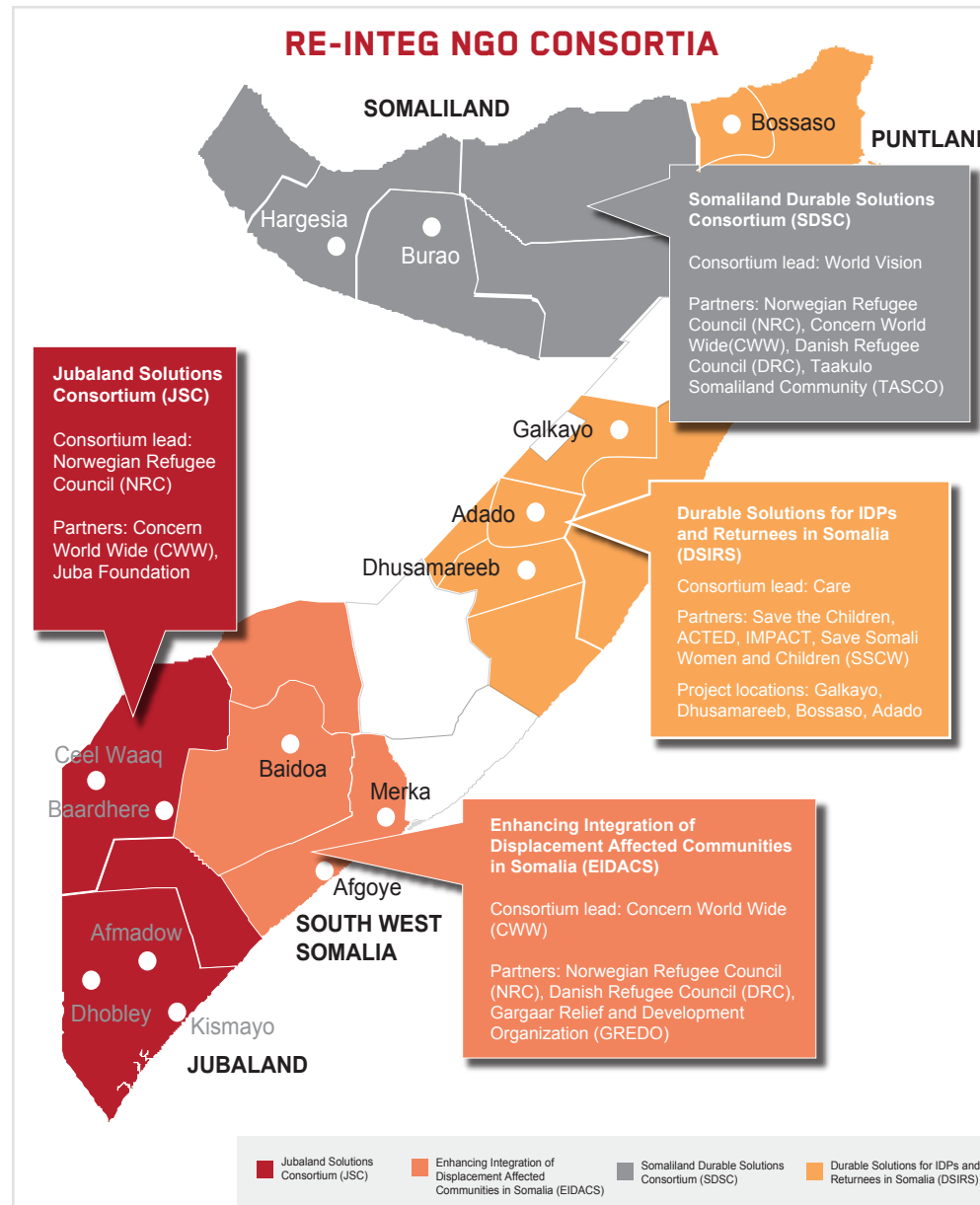
- Result 1:** Closing gaps in the management of refugee and returnees;
- Result 2:** Enhancing the rule of law by improving and implementing policies and legal framework for IDPs, refugees and returnees;
- Result 3:** Increased access to basic services and creation of realistic livelihood opportunities in the main access areas of return and departure.

The EU is working with five consortia (four NGO-led and one UN-led) to achieve result area three across Somalia and Somaliland. The NGO-led consortia include: Somaliland Durable Solutions Consortium (SDSC) led by World Vision; Enhancing Integration of Displacement Affected Communities in Somalia (EIDACS) led by Concern World Wide; Jubaland Solutions Consortium (JSC) led by Norwegian Refugee Council and the Durable Solutions for IDPs and Returnees in Somalia (DSIRS) led by Care.

KNOWLEDGE MANAGEMENT

ReDSS is leading the knowledge management and learning component for three of the EU RE-INTEG's NGO consortia (EIDACS, JSC and SDSC) while coordinating with UNHabitat and DSIRS' consortia (IMPACT is the research and knowledge management lead for DSIRS). ReDSS support on learning for the RE-INTEG partners is guided by its learning framework that has four key elements:

- **Collaborative:** to ensure learning is generated and grounded in a collaborative and collective process
- **Adaptive:** to embed an adaptive learning approach where RE-INTEG strategies and activities are designed assuming change is inevitable and learning approaches are used for ongoing adaptation
- **Iterative:** to promote the use of iterative decision making to continuously adapt durable solutions approaches
- **Locally-led:** to enable a context-specific and problem-oriented approach to learning to adopt strategies and activities for improved programming and policies for durable Solutions



CORE SOLUTIONS PROGRAMING PRINCIPLES

ReDSS support on solutions programming is guided by the following core principles:

- **Support for a Somali led approach** that ensures the Federal Government of Somalia, regional administrations and local authorities have the primary responsibility and are able to play a leadership and coordinating role of the National Development Plan (NDP)
- **Placing displacement-affected communities at the centre** to make solutions lasting, locally relevant and supportive of social cohesion
- **Adopting an area-based approach** to inform limited absorption capacity, limited access to basic services, prevailing protection concerns and access issues
- **Collective action rather than mandate driven** since facilitation of the durable solutions processes must be viewed as a collective action based on an inclusive, participatory and consensus building approach
- **Involvement of development actors from the start** to inform medium to long term sectorial priorities complementing humanitarian interventions
- **Integrated approaches take time** and in order to facilitate integrated working, donors should have longer inception phases of solutions programmes
- **Participatory approaches are critical** to ensure there is no discrimination between different population (host communities, IDPs, returnees) and which continue beyond the life of the programme.

www.regionaldss.org